

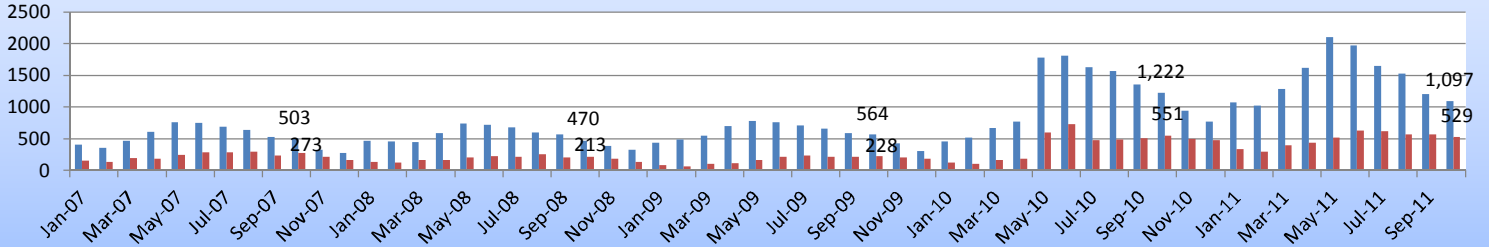
# NNEREN<sup>®</sup> STATISTICS

Monthly Statistics Report - October 2011 for Vermont  
Northern New England Real Estate Network - Compiled on November 8, 2011

*Any print or non-print reproduction of these statistics must include the following statement:*

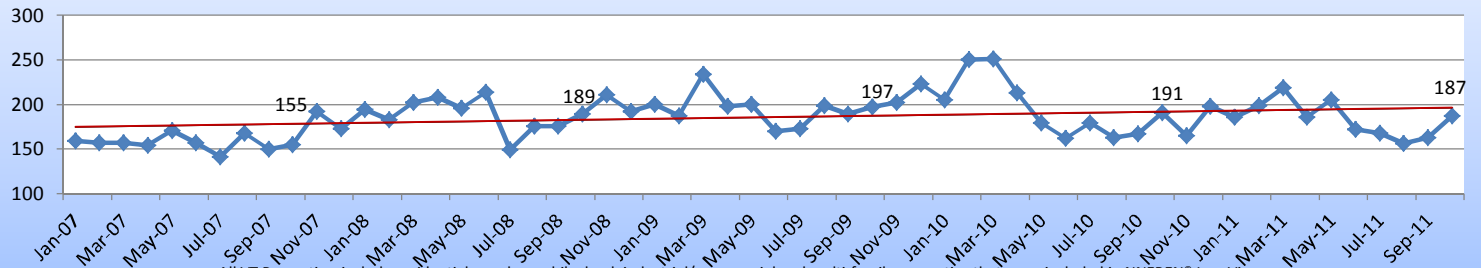
"Copyright 2011 Northern New England Real Estate Network, Inc. The reproduction of these statistics is done with the permission of NNEREN<sup>®</sup>. The statistics referenced herein are based solely upon listings submitted to the multiple listing service database of NNEREN<sup>®</sup> and do not include all properties sold and marketed for sale. ALL INFORMATION DEEMED RELIABLE BUT NOT GUARANTEED. Any analysis or commentary related to these statistics is that of the commentator, and not that of NNEREN<sup>®</sup>."

## ■ All VT Properties New Listings    ■ All VT Properties Sold Listings



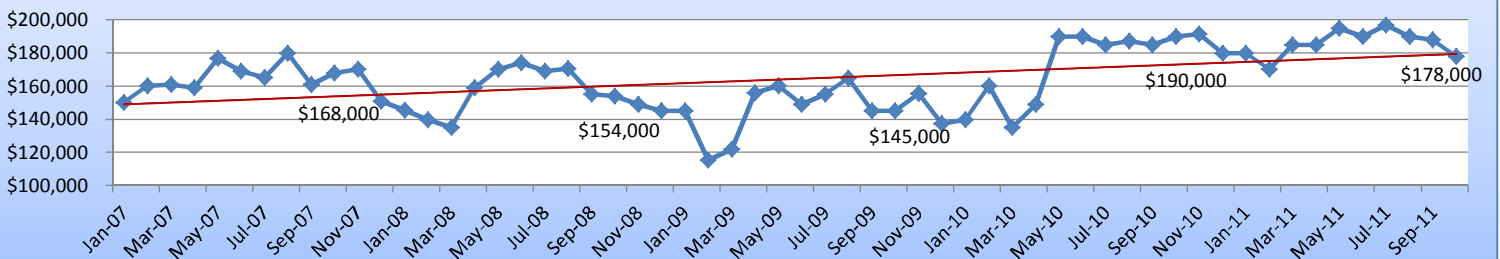
All VT Properties include residential, condo, mobile, land, industrial/commercial, rental and multi-family properties that were included in NNEREN<sup>®</sup> InnoVia.

## All VT Properties Average Days on Market



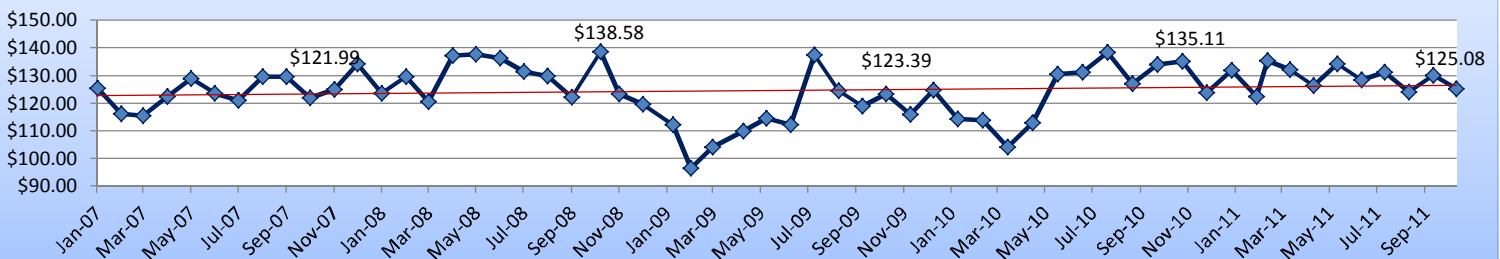
All VT Properties include residential, condo, mobile, land, industrial/commercial and multi-family properties that were included in NNEREN<sup>®</sup> InnoVia.

## All VT Properties Median Sale Price (\$)



All VT Properties include residential, condo, mobile, land, industrial/commercial and multi-family properties that were included in NNEREN<sup>®</sup> InnoVia.

## VT Residential Avg Selling Price/Sq Ft



Data represents VT Residential listings that closed in the designated month where there was data included in NNEREN<sup>®</sup> InnoVia for Sq Ft Fin



# NNEREN<sup>®</sup> STATISTICS

Monthly Statistics Report - October 2011 for Vermont  
Northern New England Real Estate Network - Compiled on November 8, 2011

*Any print or non-print reproduction of these statistics must include the following statement:*

"Copyright 2011 Northern New England Real Estate Network, Inc. The reproduction of these statistics is done with the permission of NNEREN<sup>®</sup>. The statistics referenced herein are based solely upon listings submitted to the multiple listing service database of NNEREN<sup>®</sup> and do not include all properties sold and marketed for sale. ALL INFORMATION DEEMED RELIABLE BUT NOT GUARANTEED. Any analysis or commentary related to these statistics is that of the commentator, and not that of NNEREN<sup>®</sup>."

## State of Vermont All Counties

	Oct-11	Change from Sep-11	Oct-10	Change from 10/11 - 10/10	YTD 2011	YTD 2010	2011 - 2010 YTD
<b>Residential</b>							
New Listings	649	-13.47%	660	-1.67%	8,998	9,474	-5.02%
Sold Listings	356	-13.17%	376	-5.32%	3,360	3,326	1.02%
Volume - Sold Listings (\$)	\$88,216,015	-14.14%	\$100,028,857	-11.81%	\$862,346,651	\$822,254,775	4.88%
Median Sale Price (\$)	\$201,250	-4.62%	\$212,000	-5.07%	\$210,000	\$200,000	5.00%
Average Days on Market	164	4.46%	172	-4.65%	171	160	6.88%
<b>Condo</b>							
New Listings	117	3.54%	155	-24.52%	1,716	1,964	-12.63%
Sold Listings	69	0.00%	83	-16.87%	770	761	1.18%
Volume - Sold Listings (\$)	\$15,389,728	6.57%	\$17,075,867	-9.87%	\$168,826,184	\$162,386,488	3.97%
Median Sale Price (\$)	\$190,000	1.06%	\$179,500	5.85%	\$184,000	\$185,000	-0.54%
Average Days on Market	215	22.16%	189	13.76%	167	173	-3.47%
<b>Mobile/Manufactured</b>							
New Listings	25	47.06%	23	8.70%	233	238	-2.10%
Sold Listings	15	15.38%	10	50.00%	115	100	15.00%
Volume - Sold Listings (\$)	\$541,200	-4.97%	\$391,600	38.20%	\$4,461,484	\$3,722,865	19.84%
Median Sale Price (\$)	\$34,000	0.00%	\$31,550	7.77%	\$31,000	\$29,250	5.98%
Average Days on Market	244	108.55%	97	151.55%	145	130	11.54%
<b>*All Properties</b>							
New Listings	1,097	-8.51%	1,204	-8.89%	14,385	15,392	-6.54%
Sold Listings	529	-8.00%	551	-3.99%	4,931	4,877	1.11%
Volume - Sold Listings (\$)	\$113,802,593	-12.41%	\$130,932,224	-13.08%	\$1,124,629,107	\$1,097,112,903	2.51%
Median Sale Price (\$)	\$178,000	-5.32%	\$190,000	-6.32%	\$188,000	\$185,000	1.62%
Average Days on Market	187	13.33%	190	-1.58%	181	170	6.47%

\*All properties include residential, condo, mobile, land, commercial/industrial and multi-family properties.

ALL INFORMATION DEEMED RELIABLE BUT NOT GUARANTEED



# NNEREN<sup>®</sup> STATISTICS

Monthly Statistics Report - October 2011 for Vermont  
Northern New England Real Estate Network - Compiled on November 8, 2011

*Any print or non-print reproduction of these statistics must include the following statement:*

"Copyright 2011 Northern New England Real Estate Network, Inc. The reproduction of these statistics is done with the permission of NNEREN<sup>®</sup>. The statistics referenced herein are based solely upon listings submitted to the multiple listing service database of NNEREN<sup>®</sup> and do not include all properties sold and marketed for sale. ALL INFORMATION DEEMED RELIABLE BUT NOT GUARANTEED. Any analysis or commentary related to these statistics is that of the commentator, and not that of NNEREN<sup>®</sup>."

## State of Vermont

### County: Addison, VT

	Oct-11	Change from Sep-11	Oct-10	Change from 10/11 - 10/10	YTD 2011	YTD 2010	2011 - 2010 YTD
<b>Residential</b>							
New Listings	35	-16.67%	33	6.06%	510	495	3.03%
Sold Listings	22	46.67%	12	83.33%	181	152	19.08%
Volume - Sold Listings (\$)	\$6,181,500	28.63%	\$3,240,500	90.76%	\$50,523,599	\$36,387,944	38.85%
Median Sale Price (\$)	\$204,500	-15.50%	\$262,250	-22.02%	\$235,000	\$208,750	12.57%
Average Days on Market	147	-55.45%	225	-34.67%	176	194	-9.28%
<b>Condo</b>							
New Listings	3	200.00%	0	N/A	30	20	50.00%
Sold Listings	1	-50.00%	1	0.00%	13	10	30.00%
Volume - Sold Listings (\$)	\$315,000	-17.65%	\$100,000	215.00%	\$2,418,200	\$2,130,750	13.49%
Median Sale Price (\$)	\$315,000	64.71%	\$100,000	215.00%	\$160,000	\$197,500	-18.99%
Average Days on Market	224	-32.53%	147	52.38%	181	297	-39.06%
<b>Mobile/Manufactured</b>							
New Listings	1	N/A	0	N/A	12	22	-45.45%
Sold Listings	0	N/A	1	-100.00%	10	9	11.11%
Volume - Sold Listings (\$)	\$0	N/A	\$12,000	-100.00%	\$317,400	\$268,400	18.26%
Median Sale Price (\$)	\$0	N/A	\$12,000	-100.00%	\$31,250	\$31,000	0.81%
Average Days on Market	0	N/A	12	-100.00%	141	74	90.54%
<b>*All Properties</b>							
New Listings	60	11.11%	45	33.33%	712	698	2.01%
Sold Listings	27	35.00%	19	42.11%	236	200	18.00%
Volume - Sold Listings (\$)	\$6,905,500	26.90%	\$4,097,000	68.55%	\$57,012,404	\$43,341,994	31.54%
Median Sale Price (\$)	\$190,000	-17.48%	\$175,000	8.57%	\$213,500	\$193,500	10.34%
Average Days on Market	148	-54.60%	264	-43.94%	194	203	-4.43%

\*All properties include residential, condo, mobile, land, commercial/industrial and multi-family properties.

ALL INFORMATION DEEMED RELIABLE BUT NOT GUARANTEED



# NNEREN<sup>®</sup> STATISTICS

Monthly Statistics Report - October 2011 for Vermont  
Northern New England Real Estate Network - Compiled on November 8, 2011

*Any print or non-print reproduction of these statistics must include the following statement:*

"Copyright 2011 Northern New England Real Estate Network, Inc. The reproduction of these statistics is done with the permission of NNEREN<sup>®</sup>. The statistics referenced herein are based solely upon listings submitted to the multiple listing service database of NNEREN<sup>®</sup> and do not include all properties sold and marketed for sale. ALL INFORMATION DEEMED RELIABLE BUT NOT GUARANTEED. Any analysis or commentary related to these statistics is that of the commentator, and not that of NNEREN<sup>®</sup>."

## State of Vermont

### County: Bennington, VT

	Oct-11	Change from Sep-11	Oct-10	Change from 10/11 - 10/10	YTD 2011	YTD 2010	2011 - 2010 YTD
<b>Residential</b>							
New Listings	38	-15.56%	43	-11.63%	619	608	1.81%
Sold Listings	23	-4.17%	19	21.05%	216	214	0.93%
Volume - Sold Listings (\$)	\$9,258,350	32.57%	\$6,530,800	41.76%	\$73,314,173	\$62,287,486	17.70%
Median Sale Price (\$)	\$190,000	-18.45%	\$275,000	-30.91%	\$222,000	\$189,113	17.39%
Average Days on Market	179	-20.09%	157	14.01%	235	211	11.37%
<b>Condo</b>							
New Listings	6	-14.29%	13	-53.85%	90	109	-17.43%
Sold Listings	2	-66.67%	2	0.00%	30	25	20.00%
Volume - Sold Listings (\$)	\$447,500	-66.53%	\$645,000	-30.62%	\$7,149,500	\$6,024,731	18.67%
Median Sale Price (\$)	\$223,750	-18.70%	\$322,500	-30.62%	\$227,500	\$245,000	-7.14%
Average Days on Market	121	-71.33%	29	317.24%	310	250	24.00%
<b>Mobile/Manufactured</b>							
New Listings	0	-100.00%	1	-100.00%	7	7	0.00%
Sold Listings	0	-100.00%	1	-100.00%	5	7	-28.57%
Volume - Sold Listings (\$)	\$0	-100.00%	\$31,000	-100.00%	\$122,000	\$318,000	-61.64%
Median Sale Price (\$)	\$0	-100.00%	\$31,000	-100.00%	\$16,500	\$31,000	-46.77%
Average Days on Market	0	-100.00%	370	-100.00%	114	153	-25.49%
<b>*All Properties</b>							
New Listings	69	-4.17%	82	-15.85%	934	977	-4.40%
Sold Listings	27	-27.03%	28	-3.57%	288	282	2.13%
Volume - Sold Listings (\$)	\$10,543,350	7.25%	\$7,912,450	33.25%	\$88,016,674	\$72,670,367	21.12%
Median Sale Price (\$)	\$190,000	-9.09%	\$188,750	0.66%	\$208,500	\$180,000	15.83%
Average Days on Market	206	-14.52%	184	11.96%	257	233	10.30%

\*All properties include residential, condo, mobile, land, commercial/industrial and multi-family properties.

ALL INFORMATION DEEMED RELIABLE BUT NOT GUARANTEED



# NNEREN<sup>®</sup> STATISTICS

Monthly Statistics Report - October 2011 for Vermont  
Northern New England Real Estate Network - Compiled on November 8, 2011

*Any print or non-print reproduction of these statistics must include the following statement:*

"Copyright 2011 Northern New England Real Estate Network, Inc. The reproduction of these statistics is done with the permission of NNEREN<sup>®</sup>. The statistics referenced herein are based solely upon listings submitted to the multiple listing service database of NNEREN<sup>®</sup> and do not include all properties sold and marketed for sale. ALL INFORMATION DEEMED RELIABLE BUT NOT GUARANTEED. Any analysis or commentary related to these statistics is that of the commentator, and not that of NNEREN<sup>®</sup>."

## State of Vermont

### County: Caledonia, VT

	Oct-11	Change from Sep-11	Oct-10	Change from 10/11 - 10/10	YTD 2011	YTD 2010	2011 - 2010 YTD
<b>Residential</b>							
New Listings	31	3.33%	29	6.90%	454	475	-4.42%
Sold Listings	22	46.67%	17	29.41%	155	144	7.64%
Volume - Sold Listings (\$)	\$3,590,000	100.78%	\$2,779,200	29.17%	\$22,804,600	\$22,185,518	2.79%
Median Sale Price (\$)	\$138,500	8.63%	\$140,000	-1.07%	\$135,800	\$129,000	5.27%
Average Days on Market	182	10.30%	194	-6.19%	158	155	1.94%
<b>Condo</b>							
New Listings	1	-50.00%	1	0.00%	24	35	-31.43%
Sold Listings	1	N/A	0	N/A	5	5	0.00%
Volume - Sold Listings (\$)	\$288,000	N/A	\$0	N/A	\$871,800	\$1,380,500	-36.85%
Median Sale Price (\$)	\$288,000	N/A	\$0	N/A	\$155,000	\$145,000	6.90%
Average Days on Market	905	N/A	0	N/A	403	233	72.96%
<b>Mobile/Manufactured</b>							
New Listings	0	N/A	2	-100.00%	21	16	31.25%
Sold Listings	2	N/A	2	0.00%	5	4	25.00%
Volume - Sold Listings (\$)	\$41,200	N/A	\$55,000	-25.09%	\$89,950	\$83,600	7.60%
Median Sale Price (\$)	\$20,600	N/A	\$27,500	-25.09%	\$19,500	\$16,300	19.63%
Average Days on Market	228	N/A	54	322.22%	259	161	60.87%
<b>*All Properties</b>							
New Listings	59	1.72%	60	-1.67%	739	783	-5.62%
Sold Listings	31	72.22%	20	55.00%	200	194	3.09%
Volume - Sold Listings (\$)	\$4,207,700	119.84%	\$2,871,700	46.52%	\$26,094,300	\$26,985,575	-3.30%
Median Sale Price (\$)	\$120,000	8.60%	\$120,000	0.00%	\$120,000	\$119,000	0.84%
Average Days on Market	208	28.40%	184	13.04%	186	156	19.23%

\*All properties include residential, condo, mobile, land, commercial/industrial and multi-family properties.

ALL INFORMATION DEEMED RELIABLE BUT NOT GUARANTEED



# NNEREN<sup>®</sup> STATISTICS

Monthly Statistics Report - October 2011 for Vermont  
Northern New England Real Estate Network - Compiled on November 8, 2011

*Any print or non-print reproduction of these statistics must include the following statement:*

"Copyright 2011 Northern New England Real Estate Network, Inc. The reproduction of these statistics is done with the permission of NNEREN<sup>®</sup>. The statistics referenced herein are based solely upon listings submitted to the multiple listing service database of NNEREN<sup>®</sup> and do not include all properties sold and marketed for sale. ALL INFORMATION DEEMED RELIABLE BUT NOT GUARANTEED. Any analysis or commentary related to these statistics is that of the commentator, and not that of NNEREN<sup>®</sup>."

## State of Vermont

### County: Chittenden, VT

	Oct-11	Change from Sep-11	Oct-10	Change from 10/11 - 10/10	YTD 2011	YTD 2010	2011 - 2010 YTD
<b>Residential</b>							
New Listings	108	-6.90%	94	14.89%	1,421	1,495	-4.95%
Sold Listings	74	-28.85%	79	-6.33%	756	734	3.00%
Volume - Sold Listings (\$)	\$22,884,301	-24.83%	\$28,349,020	-19.28%	\$236,853,026	\$231,965,333	2.11%
Median Sale Price (\$)	\$277,400	2.65%	\$259,900	6.73%	\$273,600	\$270,000	1.33%
Average Days on Market	93	0.00%	105	-11.43%	98	91	7.69%
<b>Condo</b>							
New Listings	39	0.00%	49	-20.41%	651	728	-10.58%
Sold Listings	34	-15.00%	33	3.03%	384	374	2.67%
Volume - Sold Listings (\$)	\$7,600,428	-8.20%	\$7,767,217	-2.15%	\$85,831,742	\$84,960,420	1.03%
Median Sale Price (\$)	\$192,750	4.19%	\$211,000	-8.65%	\$192,750	\$197,950	-2.63%
Average Days on Market	105	36.36%	77	36.36%	95	87	9.20%
<b>Mobile/Manufactured</b>							
New Listings	2	-60.00%	3	-33.33%	34	29	17.24%
Sold Listings	1	-50.00%	0	N/A	20	10	100.00%
Volume - Sold Listings (\$)	\$30,000	-70.27%	\$0	N/A	\$1,166,200	\$404,900	188.02%
Median Sale Price (\$)	\$30,000	-40.54%	\$0	N/A	\$34,450	\$32,500	6.00%
Average Days on Market	76	8.57%	0	N/A	121	160	-24.38%
<b>*All Properties</b>							
New Listings	178	-5.32%	173	2.89%	2,427	2,617	-7.26%
Sold Listings	120	-26.83%	120	0.00%	1,265	1,211	4.46%
Volume - Sold Listings (\$)	\$32,861,479	-24.08%	\$37,634,037	-12.68%	\$350,727,544	\$338,872,316	3.50%
Median Sale Price (\$)	\$247,500	0.92%	\$254,450	-2.73%	\$244,500	\$245,000	-0.20%
Average Days on Market	122	10.91%	100	22.00%	107	95	12.63%

\*All properties include residential, condo, mobile, land, commercial/industrial and multi-family properties.

ALL INFORMATION DEEMED RELIABLE BUT NOT GUARANTEED



# NNEREN<sup>®</sup> STATISTICS

Monthly Statistics Report - October 2011 for Vermont  
Northern New England Real Estate Network - Compiled on November 8, 2011

*Any print or non-print reproduction of these statistics must include the following statement:*

"Copyright 2011 Northern New England Real Estate Network, Inc. The reproduction of these statistics is done with the permission of NNEREN<sup>®</sup>. The statistics referenced herein are based solely upon listings submitted to the multiple listing service database of NNEREN<sup>®</sup> and do not include all properties sold and marketed for sale. ALL INFORMATION DEEMED RELIABLE BUT NOT GUARANTEED. Any analysis or commentary related to these statistics is that of the commentator, and not that of NNEREN<sup>®</sup>."

## State of Vermont County: Essex, VT

	Oct-11	Change from Sep-11	Oct-10	Change from 10/11 - 10/10	YTD 2011	YTD 2010	2011 - 2010 YTD
<b>Residential</b>							
New Listings	9	-25.00%	12	-25.00%	143	154	-7.14%
Sold Listings	7	-12.50%	3	133.33%	43	45	-4.44%
Volume - Sold Listings (\$)	\$547,200	-7.71%	\$654,900	-16.45%	\$5,288,100	\$4,503,215	17.43%
Median Sale Price (\$)	\$40,000	-37.25%	\$180,000	-77.78%	\$107,000	\$79,900	33.92%
Average Days on Market	233	147.87%	404	-42.33%	206	246	-16.26%
<b>Condo</b>							
New Listings	0	N/A	0	N/A	0	0	N/A
Sold Listings	0	N/A	0	N/A	0	0	N/A
Volume - Sold Listings (\$)	\$0	N/A	\$0	N/A	\$0	\$0	N/A
Median Sale Price (\$)	\$0	N/A	\$0	N/A	\$0	\$0	N/A
Average Days on Market	0	N/A	0	N/A	0	0	N/A
<b>Mobile/Manufactured</b>							
New Listings	0	N/A	0	N/A	1	1	0.00%
Sold Listings	0	N/A	0	N/A	0	0	N/A
Volume - Sold Listings (\$)	\$0	N/A	\$0	N/A	\$0	\$0	N/A
Median Sale Price (\$)	\$0	N/A	\$0	N/A	\$0	\$0	N/A
Average Days on Market	0	N/A	0	N/A	0	0	N/A
<b>*All Properties</b>							
New Listings	11	-38.89%	25	-56.00%	201	227	-11.45%
Sold Listings	12	20.00%	3	300.00%	61	59	3.39%
Volume - Sold Listings (\$)	\$1,013,700	27.54%	\$654,900	54.79%	\$6,977,658	\$5,665,715	23.16%
Median Sale Price (\$)	\$46,875	-26.47%	\$180,000	-73.96%	\$89,000	\$75,000	18.67%
Average Days on Market	181	123.46%	404	-55.20%	193	263	-26.62%

\*All properties include residential, condo, mobile, land, commercial/industrial and multi-family properties.

ALL INFORMATION DEEMED RELIABLE BUT NOT GUARANTEED



# NNEREN<sup>®</sup> STATISTICS

Monthly Statistics Report - October 2011 for Vermont  
Northern New England Real Estate Network - Compiled on November 8, 2011

*Any print or non-print reproduction of these statistics must include the following statement:*

"Copyright 2011 Northern New England Real Estate Network, Inc. The reproduction of these statistics is done with the permission of NNEREN<sup>®</sup>. The statistics referenced herein are based solely upon listings submitted to the multiple listing service database of NNEREN<sup>®</sup> and do not include all properties sold and marketed for sale. ALL INFORMATION DEEMED RELIABLE BUT NOT GUARANTEED. Any analysis or commentary related to these statistics is that of the commentator, and not that of NNEREN<sup>®</sup>."

## State of Vermont County: Franklin, VT

	Oct-11	Change from Sep-11	Oct-10	Change from 10/11 - 10/10	YTD 2011	YTD 2010	2011 - 2010 YTD
<b>Residential</b>							
New Listings	55	-20.29%	41	34.15%	702	704	-0.28%
Sold Listings	18	-48.57%	26	-30.77%	255	244	4.51%
Volume - Sold Listings (\$)	\$3,308,300	-50.73%	\$4,714,400	-29.83%	\$47,767,939	\$46,649,215	2.40%
Median Sale Price (\$)	\$189,750	-2.69%	\$164,500	15.35%	\$187,000	\$185,000	1.08%
Average Days on Market	137	17.09%	165	-16.97%	154	127	21.26%
<b>Condo</b>							
New Listings	5	400.00%	2	150.00%	58	53	9.43%
Sold Listings	0	-100.00%	1	-100.00%	18	16	12.50%
Volume - Sold Listings (\$)	\$0	-100.00%	\$47,000	-100.00%	\$3,349,107	\$2,586,300	29.49%
Median Sale Price (\$)	\$0	-100.00%	\$47,000	-100.00%	\$184,378	\$169,000	9.10%
Average Days on Market	0	-100.00%	761	-100.00%	104	187	-44.39%
<b>Mobile/Manufactured</b>							
New Listings	4	300.00%	2	100.00%	22	16	37.50%
Sold Listings	1	-50.00%	0	N/A	10	6	66.67%
Volume - Sold Listings (\$)	\$34,000	-77.03%	\$0	N/A	\$458,400	\$278,500	64.60%
Median Sale Price (\$)	\$34,000	-54.05%	\$0	N/A	\$48,950	\$51,000	-4.02%
Average Days on Market	119	-7.03%	0	N/A	83	115	-27.83%
<b>*All Properties</b>							
New Listings	75	-21.05%	71	5.63%	1,016	1,000	1.60%
Sold Listings	31	-35.42%	30	3.33%	339	300	13.00%
Volume - Sold Listings (\$)	\$4,502,300	-43.95%	\$5,178,750	-13.06%	\$56,820,406	\$53,332,765	6.54%
Median Sale Price (\$)	\$137,000	-13.56%	\$152,450	-10.13%	\$169,900	\$177,250	-4.15%
Average Days on Market	191	45.80%	181	5.52%	162	136	19.12%

\*All properties include residential, condo, mobile, land, commercial/industrial and multi-family properties.

ALL INFORMATION DEEMED RELIABLE BUT NOT GUARANTEED



# NNEREN<sup>®</sup> STATISTICS

Monthly Statistics Report - October 2011 for Vermont  
Northern New England Real Estate Network - Compiled on November 8, 2011

*Any print or non-print reproduction of these statistics must include the following statement:*

"Copyright 2011 Northern New England Real Estate Network, Inc. The reproduction of these statistics is done with the permission of NNEREN<sup>®</sup>. The statistics referenced herein are based solely upon listings submitted to the multiple listing service database of NNEREN<sup>®</sup> and do not include all properties sold and marketed for sale. ALL INFORMATION DEEMED RELIABLE BUT NOT GUARANTEED. Any analysis or commentary related to these statistics is that of the commentator, and not that of NNEREN<sup>®</sup>."

## State of Vermont

### County: Grand Isle, VT

	Oct-11	Change from Sep-11	Oct-10	Change from 10/11 - 10/10	YTD 2011	YTD 2010	2011 - 2010 YTD
<b>Residential</b>							
New Listings	20	-20.00%	14	42.86%	243	261	-6.90%
Sold Listings	7	-22.22%	7	0.00%	67	60	11.67%
Volume - Sold Listings (\$)	\$3,117,900	56.42%	\$1,866,525	67.04%	\$19,377,577	\$14,396,474	34.60%
Median Sale Price (\$)	\$385,000	114.01%	\$230,000	67.39%	\$198,000	\$201,500	-1.74%
Average Days on Market	180	25.00%	127	41.73%	172	139	23.74%
<b>Condo</b>							
New Listings	0	N/A	0	N/A	1	0	N/A
Sold Listings	0	N/A	0	N/A	0	0	N/A
Volume - Sold Listings (\$)	\$0	N/A	\$0	N/A	\$0	\$0	N/A
Median Sale Price (\$)	\$0	N/A	\$0	N/A	\$0	\$0	N/A
Average Days on Market	0	N/A	0	N/A	0	0	N/A
<b>Mobile/Manufactured</b>							
New Listings	0	N/A	0	N/A	1	2	-50.00%
Sold Listings	0	N/A	0	N/A	1	0	N/A
Volume - Sold Listings (\$)	\$0	N/A	\$0	N/A	\$90,000	\$0	N/A
Median Sale Price (\$)	\$0	N/A	\$0	N/A	\$90,000	\$0	N/A
Average Days on Market	0	N/A	0	N/A	224	0	N/A
<b>*All Properties</b>							
New Listings	28	-20.00%	19	47.37%	318	387	-17.83%
Sold Listings	7	-22.22%	8	-12.50%	77	75	2.67%
Volume - Sold Listings (\$)	\$3,117,900	56.42%	\$2,016,525	54.62%	\$20,428,277	\$16,938,374	20.60%
Median Sale Price (\$)	\$385,000	114.01%	\$210,563	82.84%	\$185,000	\$190,000	-2.63%
Average Days on Market	180	25.00%	127	41.73%	169	142	19.01%

\*All properties include residential, condo, mobile, land, commercial/industrial and multi-family properties.

ALL INFORMATION DEEMED RELIABLE BUT NOT GUARANTEED



# NNEREN<sup>®</sup> STATISTICS

Monthly Statistics Report - October 2011 for Vermont  
Northern New England Real Estate Network - Compiled on November 8, 2011

*Any print or non-print reproduction of these statistics must include the following statement:*

"Copyright 2011 Northern New England Real Estate Network, Inc. The reproduction of these statistics is done with the permission of NNEREN<sup>®</sup>. The statistics referenced herein are based solely upon listings submitted to the multiple listing service database of NNEREN<sup>®</sup> and do not include all properties sold and marketed for sale. ALL INFORMATION DEEMED RELIABLE BUT NOT GUARANTEED. Any analysis or commentary related to these statistics is that of the commentator, and not that of NNEREN<sup>®</sup>."

## State of Vermont

### County: Lamoille, VT

	Oct-11	Change from Sep-11	Oct-10	Change from 10/11 - 10/10	YTD 2011	YTD 2010	2011 - 2010 YTD
<b>Residential</b>							
New Listings	27	-40.00%	30	-10.00%	438	515	-14.95%
Sold Listings	19	11.76%	15	26.67%	149	137	8.76%
Volume - Sold Listings (\$)	\$5,445,100	-3.78%	\$4,985,812	9.21%	\$54,978,754	\$47,488,112	15.77%
Median Sale Price (\$)	\$225,000	25.07%	\$250,000	-10.00%	\$235,000	\$207,000	13.53%
Average Days on Market	240	3.90%	172	39.53%	213	176	21.02%
<b>Condo</b>							
New Listings	8	0.00%	12	-33.33%	114	144	-20.83%
Sold Listings	2	100.00%	3	-33.33%	27	24	12.50%
Volume - Sold Listings (\$)	\$527,000	31.75%	\$900,250	-41.46%	\$10,153,920	\$7,427,184	36.71%
Median Sale Price (\$)	\$263,500	-34.13%	\$212,500	24.00%	\$256,000	\$251,967	1.60%
Average Days on Market	25	-89.18%	199	-87.44%	241	270	-10.74%
<b>Mobile/Manufactured</b>							
New Listings	1	N/A	0	N/A	12	16	-25.00%
Sold Listings	0	-100.00%	1	-100.00%	6	3	100.00%
Volume - Sold Listings (\$)	\$0	-100.00%	\$45,000	-100.00%	\$193,000	\$125,225	54.12%
Median Sale Price (\$)	\$0	-100.00%	\$45,000	-100.00%	\$24,000	\$45,000	-46.67%
Average Days on Market	0	-100.00%	74	-100.00%	209	178	17.42%
<b>*All Properties</b>							
New Listings	64	-22.89%	63	1.59%	801	901	-11.10%
Sold Listings	24	14.29%	25	-4.00%	210	200	5.00%
Volume - Sold Listings (\$)	\$6,264,600	-2.12%	\$6,985,562	-10.32%	\$69,806,674	\$61,777,921	13.00%
Median Sale Price (\$)	\$212,500	18.12%	\$212,500	0.00%	\$210,000	\$199,500	5.26%
Average Days on Market	211	4.98%	251	-15.94%	225	203	10.84%

\*All properties include residential, condo, mobile, land, commercial/industrial and multi-family properties.

ALL INFORMATION DEEMED RELIABLE BUT NOT GUARANTEED



# NNEREN<sup>®</sup> STATISTICS

Monthly Statistics Report - October 2011 for Vermont  
Northern New England Real Estate Network - Compiled on November 8, 2011

*Any print or non-print reproduction of these statistics must include the following statement:*

"Copyright 2011 Northern New England Real Estate Network, Inc. The reproduction of these statistics is done with the permission of NNEREN<sup>®</sup>. The statistics referenced herein are based solely upon listings submitted to the multiple listing service database of NNEREN<sup>®</sup> and do not include all properties sold and marketed for sale. ALL INFORMATION DEEMED RELIABLE BUT NOT GUARANTEED. Any analysis or commentary related to these statistics is that of the commentator, and not that of NNEREN<sup>®</sup>."

## State of Vermont County: Orange, VT

	Oct-11	Change from Sep-11	Oct-10	Change from 10/11 - 10/10	YTD 2011	YTD 2010	2011 - 2010 YTD
<b>Residential</b>							
New Listings	33	-28.26%	28	17.86%	409	452	-9.51%
Sold Listings	12	-29.41%	17	-29.41%	129	166	-22.29%
Volume - Sold Listings (\$)	\$2,821,400	-25.18%	\$2,683,000	5.16%	\$25,515,725	\$30,784,413	-17.11%
Median Sale Price (\$)	\$144,500	-9.69%	\$154,000	-6.17%	\$166,000	\$166,000	0.00%
Average Days on Market	157	-28.96%	124	26.61%	209	166	25.90%
<b>Condo</b>							
New Listings	0	N/A	0	N/A	1	1	0.00%
Sold Listings	0	N/A	0	N/A	0	0	N/A
Volume - Sold Listings (\$)	\$0	N/A	\$0	N/A	\$0	\$0	N/A
Median Sale Price (\$)	\$0	N/A	\$0	N/A	\$0	\$0	N/A
Average Days on Market	0	N/A	0	N/A	0	0	N/A
<b>Mobile/Manufactured</b>							
New Listings	4	N/A	1	300.00%	14	13	7.69%
Sold Listings	2	N/A	1	100.00%	5	4	25.00%
Volume - Sold Listings (\$)	\$70,000	N/A	\$2,500	2700.00%	\$181,900	\$172,500	5.45%
Median Sale Price (\$)	\$35,000	N/A	\$2,500	1300.00%	\$38,900	\$40,000	-2.75%
Average Days on Market	214	N/A	121	76.86%	121	58	108.62%
<b>*All Properties</b>							
New Listings	51	-30.14%	42	21.43%	594	616	-3.57%
Sold Listings	20	-16.67%	24	-16.67%	177	196	-9.69%
Volume - Sold Listings (\$)	\$3,349,900	-27.17%	\$3,117,000	7.47%	\$29,822,725	\$33,436,024	-10.81%
Median Sale Price (\$)	\$87,450	-43.67%	\$124,250	-29.62%	\$145,000	\$155,000	-6.45%
Average Days on Market	180	-0.55%	176	2.27%	193	176	9.66%

\*All properties include residential, condo, mobile, land, commercial/industrial and multi-family properties.

ALL INFORMATION DEEMED RELIABLE BUT NOT GUARANTEED



# NNEREN<sup>®</sup> STATISTICS

Monthly Statistics Report - October 2011 for Vermont  
Northern New England Real Estate Network - Compiled on November 8, 2011

*Any print or non-print reproduction of these statistics must include the following statement:*

"Copyright 2011 Northern New England Real Estate Network, Inc. The reproduction of these statistics is done with the permission of NNEREN<sup>®</sup>. The statistics referenced herein are based solely upon listings submitted to the multiple listing service database of NNEREN<sup>®</sup> and do not include all properties sold and marketed for sale. ALL INFORMATION DEEMED RELIABLE BUT NOT GUARANTEED. Any analysis or commentary related to these statistics is that of the commentator, and not that of NNEREN<sup>®</sup>."

## State of Vermont County: Orleans, VT

	Oct-11	Change from Sep-11	Oct-10	Change from 10/11 - 10/10	YTD 2011	YTD 2010	2011 - 2010 YTD
<b>Residential</b>							
New Listings	35	-10.26%	40	-12.50%	496	486	2.06%
Sold Listings	25	0.00%	26	-3.85%	178	168	5.95%
Volume - Sold Listings (\$)	\$3,970,889	-8.36%	\$5,294,565	-25.00%	\$29,157,760	\$29,529,494	-1.26%
Median Sale Price (\$)	\$150,500	20.40%	\$171,033	-12.01%	\$135,500	\$140,000	-3.21%
Average Days on Market	237	74.26%	221	7.24%	242	206	17.48%
<b>Condo</b>							
New Listings	1	-50.00%	0	N/A	14	17	-17.65%
Sold Listings	0	N/A	3	-100.00%	3	12	-75.00%
Volume - Sold Listings (\$)	\$0	N/A	\$530,000	-100.00%	\$368,000	\$1,548,500	-76.24%
Median Sale Price (\$)	\$0	N/A	\$155,000	-100.00%	\$115,000	\$122,500	-6.12%
Average Days on Market	0	N/A	162	-100.00%	16	162	-90.12%
<b>Mobile/Manufactured</b>							
New Listings	4	300.00%	2	100.00%	23	24	-4.17%
Sold Listings	1	0.00%	1	0.00%	10	11	-9.09%
Volume - Sold Listings (\$)	\$79,500	98.25%	\$139,500	-43.01%	\$392,500	\$556,500	-29.47%
Median Sale Price (\$)	\$79,500	98.25%	\$139,500	-43.01%	\$38,000	\$44,500	-14.61%
Average Days on Market	134	6600.00%	146	-8.22%	114	153	-25.49%
<b>*All Properties</b>							
New Listings	69	30.19%	81	-14.81%	821	836	-1.79%
Sold Listings	36	2.86%	38	-5.26%	261	263	-0.76%
Volume - Sold Listings (\$)	\$5,050,389	-11.41%	\$6,818,865	-25.94%	\$35,542,410	\$37,000,419	-3.94%
Median Sale Price (\$)	\$132,000	32.00%	\$156,000	-15.38%	\$105,000	\$115,000	-8.70%
Average Days on Market	264	125.64%	203	30.05%	225	184	22.28%

\*All properties include residential, condo, mobile, land, commercial/industrial and multi-family properties.

ALL INFORMATION DEEMED RELIABLE BUT NOT GUARANTEED



# NNEREN<sup>®</sup> STATISTICS

Monthly Statistics Report - October 2011 for Vermont  
Northern New England Real Estate Network - Compiled on November 8, 2011

*Any print or non-print reproduction of these statistics must include the following statement:*

"Copyright 2011 Northern New England Real Estate Network, Inc. The reproduction of these statistics is done with the permission of NNEREN<sup>®</sup>. The statistics referenced herein are based solely upon listings submitted to the multiple listing service database of NNEREN<sup>®</sup> and do not include all properties sold and marketed for sale. ALL INFORMATION DEEMED RELIABLE BUT NOT GUARANTEED. Any analysis or commentary related to these statistics is that of the commentator, and not that of NNEREN<sup>®</sup>."

## State of Vermont

### County: Rutland, VT

	Oct-11	Change from Sep-11	Oct-10	Change from 10/11 - 10/10	YTD 2011	YTD 2010	2011 - 2010 YTD
<b>Residential</b>							
New Listings	78	-4.88%	73	6.85%	989	1,116	-11.38%
Sold Listings	42	10.53%	27	55.56%	327	328	-0.30%
Volume - Sold Listings (\$)	\$7,359,725	-21.13%	\$5,090,000	44.59%	\$63,915,440	\$62,688,405	1.96%
Median Sale Price (\$)	\$142,450	-10.97%	\$150,000	-5.03%	\$159,250	\$162,500	-2.00%
Average Days on Market	163	-22.01%	202	-19.31%	179	166	7.83%
<b>Condo</b>							
New Listings	11	-21.43%	23	-52.17%	166	183	-9.29%
Sold Listings	2	0.00%	7	-71.43%	65	63	3.17%
Volume - Sold Listings (\$)	\$415,000	93.02%	\$1,029,500	-59.69%	\$8,936,400	\$7,451,703	19.92%
Median Sale Price (\$)	\$207,500	93.02%	\$133,000	56.02%	\$115,000	\$118,000	-2.54%
Average Days on Market	282	27.03%	415	-32.05%	307	316	-2.85%
<b>Mobile/Manufactured</b>							
New Listings	4	33.33%	5	-20.00%	25	24	4.17%
Sold Listings	0	-100.00%	2	-100.00%	12	7	71.43%
Volume - Sold Listings (\$)	\$0	-100.00%	\$74,500	-100.00%	\$415,500	\$256,000	62.30%
Median Sale Price (\$)	\$0	-100.00%	\$37,250	-100.00%	\$25,275	\$19,500	29.62%
Average Days on Market	0	-100.00%	44	-100.00%	90	187	-51.87%
<b>*All Properties</b>							
New Listings	120	0.84%	146	-17.81%	1,548	1,754	-11.74%
Sold Listings	52	13.04%	48	8.33%	471	470	0.21%
Volume - Sold Listings (\$)	\$8,590,425	-13.72%	\$8,963,900	-4.17%	\$80,107,464	\$79,890,538	0.27%
Median Sale Price (\$)	\$132,950	-7.99%	\$142,500	-6.70%	\$142,000	\$149,700	-5.14%
Average Days on Market	154	-23.38%	214	-28.04%	205	191	7.33%

\*All properties include residential, condo, mobile, land, commercial/industrial and multi-family properties.

ALL INFORMATION DEEMED RELIABLE BUT NOT GUARANTEED



# NNEREN<sup>®</sup> STATISTICS

Monthly Statistics Report - October 2011 for Vermont  
Northern New England Real Estate Network - Compiled on November 8, 2011

*Any print or non-print reproduction of these statistics must include the following statement:*

"Copyright 2011 Northern New England Real Estate Network, Inc. The reproduction of these statistics is done with the permission of NNEREN<sup>®</sup>. The statistics referenced herein are based solely upon listings submitted to the multiple listing service database of NNEREN<sup>®</sup> and do not include all properties sold and marketed for sale. ALL INFORMATION DEEMED RELIABLE BUT NOT GUARANTEED. Any analysis or commentary related to these statistics is that of the commentator, and not that of NNEREN<sup>®</sup>."

## State of Vermont

### County: Washington, VT

	Oct-11	Change from Sep-11	Oct-10	Change from 10/11 - 10/10	YTD 2011	YTD 2010	2011 - 2010 YTD
<b>Residential</b>							
New Listings	44	-34.33%	50	-12.00%	663	669	-0.90%
Sold Listings	30	-14.29%	37	-18.92%	272	262	3.82%
Volume - Sold Listings (\$)	\$5,954,700	-10.48%	\$7,891,130	-24.54%	\$60,443,960	\$54,820,798	10.26%
Median Sale Price (\$)	\$195,500	15.00%	\$185,000	5.68%	\$200,000	\$185,000	8.11%
Average Days on Market	146	-19.34%	144	1.39%	172	166	3.61%
<b>Condo</b>							
New Listings	2	-66.67%	13	-84.62%	122	128	-4.69%
Sold Listings	4	33.33%	4	0.00%	52	48	8.33%
Volume - Sold Listings (\$)	\$688,800	34.53%	\$387,900	77.57%	\$9,262,650	\$8,755,800	5.79%
Median Sale Price (\$)	\$165,200	13.93%	\$106,450	55.19%	\$163,900	\$174,000	-5.80%
Average Days on Market	462	298.28%	306	50.98%	253	242	4.55%
<b>Mobile/Manufactured</b>							
New Listings	1	-50.00%	0	N/A	17	18	-5.56%
Sold Listings	2	100.00%	0	N/A	7	11	-36.36%
Volume - Sold Listings (\$)	\$73,000	175.47%	\$0	N/A	\$207,500	\$368,400	-43.68%
Median Sale Price (\$)	\$36,500	37.74%	\$0	N/A	\$33,500	\$20,000	67.50%
Average Days on Market	91	1200.00%	0	N/A	71	109	-34.86%
<b>*All Properties</b>							
New Listings	73	-28.43%	88	-17.05%	1,104	1,136	-2.82%
Sold Listings	46	2.22%	49	-6.12%	386	396	-2.53%
Volume - Sold Listings (\$)	\$7,497,000	-3.68%	\$9,669,930	-22.47%	\$76,169,910	\$84,934,097	-10.32%
Median Sale Price (\$)	\$144,950	-6.48%	\$169,900	-14.69%	\$179,200	\$165,000	8.61%
Average Days on Market	177	0.57%	211	-16.11%	201	200	0.50%

\*All properties include residential, condo, mobile, land, commercial/industrial and multi-family properties.

ALL INFORMATION DEEMED RELIABLE BUT NOT GUARANTEED



# NNEREN<sup>®</sup> STATISTICS

Monthly Statistics Report - October 2011 for Vermont  
Northern New England Real Estate Network - Compiled on November 8, 2011

*Any print or non-print reproduction of these statistics must include the following statement:*

"Copyright 2011 Northern New England Real Estate Network, Inc. The reproduction of these statistics is done with the permission of NNEREN<sup>®</sup>. The statistics referenced herein are based solely upon listings submitted to the multiple listing service database of NNEREN<sup>®</sup> and do not include all properties sold and marketed for sale. ALL INFORMATION DEEMED RELIABLE BUT NOT GUARANTEED. Any analysis or commentary related to these statistics is that of the commentator, and not that of NNEREN<sup>®</sup>."

## State of Vermont County: Windham, VT

	Oct-11	Change from Sep-11	Oct-10	Change from 10/11 - 10/10	YTD 2011	YTD 2010	2011 - 2010 YTD
<b>Residential</b>							
New Listings	63	10.53%	75	-16.00%	817	889	-8.10%
Sold Listings	15	-58.33%	36	-58.33%	266	285	-6.67%
Volume - Sold Listings (\$)	\$3,775,250	-67.14%	\$9,700,400	-61.08%	\$62,473,894	\$73,249,925	-14.71%
Median Sale Price (\$)	\$180,000	-18.00%	\$187,500	-4.00%	\$195,000	\$215,000	-9.30%
Average Days on Market	341	101.78%	221	54.30%	199	184	8.15%
<b>Condo</b>							
New Listings	26	30.00%	21	23.81%	254	291	-12.71%
Sold Listings	15	114.29%	18	-16.67%	111	107	3.74%
Volume - Sold Listings (\$)	\$3,087,500	88.37%	\$3,615,000	-14.59%	\$27,107,115	\$24,326,850	11.43%
Median Sale Price (\$)	\$145,000	-37.09%	\$197,500	-26.58%	\$165,000	\$171,250	-3.65%
Average Days on Market	281	6.44%	237	18.57%	199	228	-12.72%
<b>Mobile/Manufactured</b>							
New Listings	1	-66.67%	2	-50.00%	20	15	33.33%
Sold Listings	3	N/A	0	N/A	9	12	-25.00%
Volume - Sold Listings (\$)	\$132,500	N/A	\$0	N/A	\$285,934	\$408,240	-29.96%
Median Sale Price (\$)	\$35,000	N/A	\$0	N/A	\$26,000	\$25,000	4.00%
Average Days on Market	84	N/A	0	N/A	153	91	68.13%
<b>*All Properties</b>							
New Listings	108	-12.90%	140	-22.86%	1,418	1,574	-9.91%
Sold Listings	37	-26.00%	62	-40.32%	454	487	-6.78%
Volume - Sold Listings (\$)	\$7,303,250	-47.97%	\$14,790,900	-50.62%	\$96,683,608	\$108,326,515	-10.75%
Median Sale Price (\$)	\$155,000	-27.74%	\$187,500	-17.33%	\$172,750	\$181,000	-4.56%
Average Days on Market	298	65.56%	247	20.65%	203	206	-1.46%

\*All properties include residential, condo, mobile, land, commercial/industrial and multi-family properties.

ALL INFORMATION DEEMED RELIABLE BUT NOT GUARANTEED



# NNEREN<sup>®</sup> STATISTICS

Monthly Statistics Report - October 2011 for Vermont  
Northern New England Real Estate Network - Compiled on November 8, 2011

*Any print or non-print reproduction of these statistics must include the following statement:*

"Copyright 2011 Northern New England Real Estate Network, Inc. The reproduction of these statistics is done with the permission of NNEREN<sup>®</sup>. The statistics referenced herein are based solely upon listings submitted to the multiple listing service database of NNEREN<sup>®</sup> and do not include all properties sold and marketed for sale. ALL INFORMATION DEEMED RELIABLE BUT NOT GUARANTEED. Any analysis or commentary related to these statistics is that of the commentator, and not that of NNEREN<sup>®</sup>."

## State of Vermont County: Windsor, VT

	Oct-11	Change from Sep-11	Oct-10	Change from 10/11 - 10/10	YTD 2011	YTD 2010	2011 - 2010 YTD
<b>Residential</b>							
New Listings	73	-2.67%	98	-25.51%	1,094	1,155	-5.28%
Sold Listings	40	25.00%	55	-27.27%	366	387	-5.43%
Volume - Sold Listings (\$)	\$10,001,400	22.24%	\$16,248,605	-38.45%	\$109,932,104	\$105,318,443	4.38%
Median Sale Price (\$)	\$209,000	18.25%	\$210,000	-0.48%	\$200,000	\$192,000	4.17%
Average Days on Market	156	12.23%	217	-28.11%	205	209	-1.91%
<b>Condo</b>							
New Listings	15	15.38%	21	-28.57%	191	255	-25.10%
Sold Listings	8	33.33%	11	-27.27%	62	77	-19.48%
Volume - Sold Listings (\$)	\$2,020,500	47.70%	\$2,054,000	-1.63%	\$13,377,750	\$15,793,750	-15.30%
Median Sale Price (\$)	\$209,000	-16.06%	\$135,000	54.81%	\$195,000	\$185,000	5.41%
Average Days on Market	406	-2.87%	244	66.39%	240	277	-13.36%
<b>Mobile/Manufactured</b>							
New Listings	3	200.00%	5	-40.00%	24	35	-31.43%
Sold Listings	3	-25.00%	1	200.00%	15	16	-6.25%
Volume - Sold Listings (\$)	\$81,000	-54.75%	\$32,100	152.34%	\$541,200	\$482,600	12.14%
Median Sale Price (\$)	\$26,000	-41.57%	\$32,100	-19.00%	\$34,000	\$28,500	19.30%
Average Days on Market	674	150.56%	56	1103.57%	268	143	87.41%
<b>*All Properties</b>							
New Listings	132	5.60%	169	-21.89%	1,752	1,886	-7.10%
Sold Listings	59	22.92%	77	-23.38%	506	544	-6.99%
Volume - Sold Listings (\$)	\$12,595,100	24.10%	\$20,220,705	-37.71%	\$130,419,053	\$133,940,283	-2.63%
Median Sale Price (\$)	\$165,000	29.41%	\$185,000	-10.81%	\$185,000	\$178,500	3.64%
Average Days on Market	232	0.00%	219	5.94%	226	221	2.26%

\*All properties include residential, condo, mobile, land, commercial/industrial and multi-family properties.

ALL INFORMATION DEEMED RELIABLE BUT NOT GUARANTEED